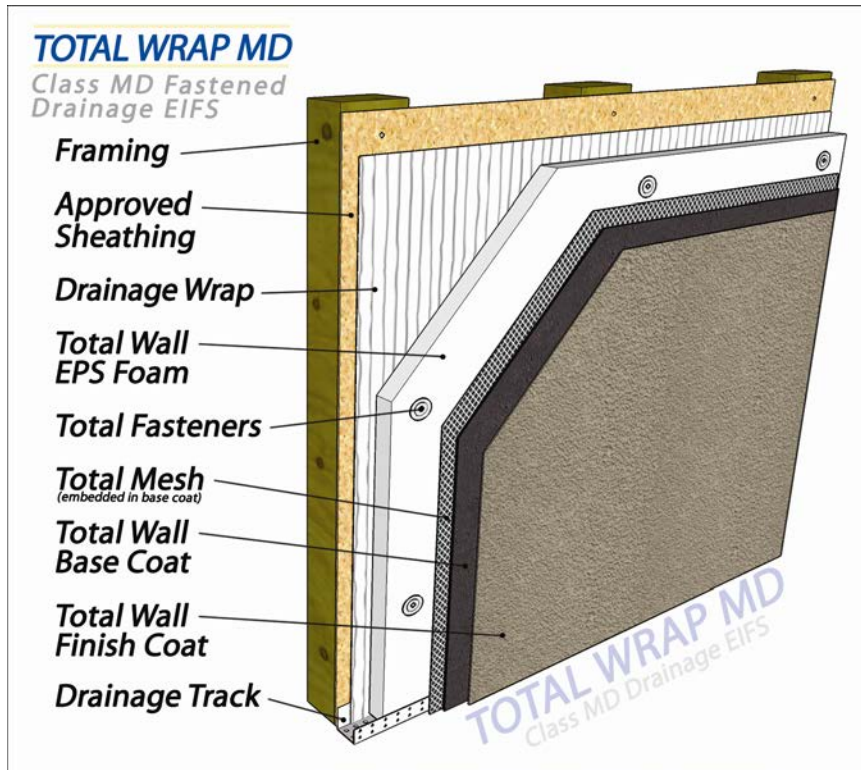


TOTAL WRAP MD □ CLASS MD □ Section 07240
MasterFormat 2004 07-24-19Fastened Drainage EIFS With Sheet Applied Membrane **AMERICA'S EIFS AND STUCCO COMPANY!**

The **Total Wrap MD** system is a moisture drainable exterior wall cladding that utilizes a sheet applied moisture barrier plus a drainage plane as secondary protection against water intrusion.

It is used in both commercial and residential applications.

This system is eligible for a Total Wall system warranty when installed by a Registered Total Wall Applicator.

Layer 1- Substrate

Approved substrates are: exterior gypsum board, exterior grade plywood, oriented strand board, siliconized-core gypsum board, cement board, or other substrates as approved, in writing, from Total Wall, Inc.

Layer 2- Moisture Barrier

A variety of sheet-applied Grade D moisture barriers as well as proprietary self-drainable wraps, including Tyvek StuccoWrap, for example, are approved for this system.

Layer 3- Rigid Insulation

The approved rigid insulation board must be 1 lb per cubic foot Expanded Polystyrene (EPS) board manufactured in accordance with Total Wall specifications and meeting ASTM C578 Type I Class A requirements. The EPS boards must be attached with approved mechanical fasteners.

Layer 4- Base Coat and Reinforcing Mesh

Approved base coats are T-2000 Base Coat, Total EZ Base NCB (Non-Cement Base), and Total Foam N' Base Coat ES. There are 5 grades of reinforcing meshes available: Standard 4 oz; Enhanced 6 oz; Intermediate 11 oz; High Impact 15 oz; and Ultra High Impact 20 oz.

Both High Impact and Ultra High Impact require a second layer of Standard 4 oz reinforcing mesh.

Layer 5- Finish Coat

Total Wall 100% acrylic based, synthetic finishes are very high quality and are available in Premier and Journeyman grades, in eight different textures. Total Wall pre-mixed synthetic finishes can be tinted to match virtually any color.